



## **Taxonomic Significance of Petal and Sepal Micromorphological Characteristics in Some *Justicia* Nees (Acanthaceae) Species in Peninsular Malaysia**

### **Authors:**

Amirul-Aiman Ahmad Juhari\*, Noraini Talip, Che Nurul-Aini Che Amri, Siti Khaulah Abdul Razak, Nurul-Syahirah Mansur, Amalia Rusydi and Ruzi Abdul Rahman

\***Correspondence:** amirulaimanahmad@gmail.com

**DOI:** <https://doi.org/10.21315/tlsr2019.30.2.5>

### **Highlights**

- Types of epidermal and cuticular waxes on petal and sepal.
- Types of trichomes on petal and sepal.
- Types of stomata on petal and sepal.

## **Taxonomic Significance of Petal and Sepal Micromorphological Characteristics in Some *Justicia* Nees (Acanthaceae) Species in Peninsular Malaysia**

<sup>1,2</sup>Amirul-Aiman Ahmad Juhari\*, <sup>1</sup>Noraini Talip, <sup>3</sup>Che Nurul-Aini Che Amri, <sup>1</sup>Siti Khaulah Abdul Razak, <sup>1,4</sup>Nurul-Syahirah Mansur, <sup>1,5</sup>Amalia Rusydi and <sup>1</sup>Ruzi Abdul Rahman

<sup>1</sup>School of Environmental Science and Natural Resources, Faculty of Science and Technology, Universiti Kebangsaan Malaysia, 43600 UKM Bangi, Selangor, Malaysia

<sup>2</sup>Department of Environmental Sciences, Faculty of Environmental Studies, Universiti Putra Malaysia, 43400 UPM Serdang, Selangor, Malaysia

<sup>3</sup>Department of Plant Science, Kulliyah of Science, International Islamic University Malaysia, Bandar Indera Mahkota, 25200 Kuantan, Pahang, Malaysia

<sup>4</sup>Department of Agronomy, Faculty of Plantation and Agrotechnology, Universiti Teknologi MARA, Jasin Campus, 77300 Merlimau, Melaka, Malaysia

<sup>5</sup>Department of Biology, Mathematics and Science Faculty, Syiah Kuala University, 23111 Darussalam, Banda Aceh, Indonesia

**Publication date:** 18 July 2019

**To cite this article:** Amirul-Aiman Ahmad Juhari, Noraini Talip, Che Nurul-Aini Che Amri, Siti Khaulah Abdul Razak, Nurul-Syahirah Mansur, Amalia Rusydi and Ruzi Abdul Rahman. (2019). Taxonomic significance of petal and sepal micromorphological characteristics in some *Justicia* Nees (Acanthaceae) species in Peninsular Malaysia. *Tropical Life Sciences Research* 30(2): 51–69. <https://doi.org/10.21315/tlsr2019.30.2.5>

**To link to this article:** <https://doi.org/10.21315/tlsr2019.30.2.5>

**Abstrak:** Acanthaceae merupakan famili tumbuhan berbunga di bawah order Lamiales dan terdiri daripada sekurang-kurangnya 4,000 spesies di kawasan tropika dan juga kawasan subtropika dengan genus *Justicia* merupakan genus terbesar. Kajian mikromorfologi petal dan sepal telah dijalankan ke atas enam spesies iaitu *Justicia betonica* L., *J. carnea* Lindl., *J. comata* (L.) Lam., *J. gendarussa* Burm.f., *J. procumbens* L. dan *J. ptychostoma* Nees. Kaedah kajian termasuklah penetapan bunga di dalam larutan penetap, siri dehidrasi, titik pengeringan genting dan cerapan di bawah mikroskop imbasan elektron. Hasil kajian menunjukkan kesemua enam spesies mempunyai variasi dan perbezaan mikromorfologi pada permukaan epidermis petal dan sepal. Kutikel lilin boleh ditemui pada kedua-dua permukaan epidermis petal dan sepal kesemua spesies yang dikaji. Kutikel lilin butir merupakan satu-satunya jenis kutikel lilin yang ditemui pada kesemua permukaan petal dan sepal spesies kajian. Terdapat lapan jenis trikoma ditemui pada permukaan epidermis sepal dan juga lapan jenis trikoma pada permukaan epidermis petal. *Justicia betonica* boleh dibezakan secara langsung dengan kehadiran stomata amfidiasitik pada permukaan epidermis petal dan stomata tidak hadir pada permukaan petal spesies yang lain. Kesimpulannya, hasil kajian ini membuktikan ciri mikromorfologi petal dan sepal mempunyai kesignifikan sistematik dan boleh digunakan sebagai data sokongan bagi pembezaan dan pengenalpastian spesies dalam genus *Justicia*.

**Kata kunci:** Mikromorfologi Sepal dan Petal, *Justicia*, Acanthaceae

---

\*Corresponding author: [amirulaimanahmad@gmail.com](mailto:amirulaimanahmad@gmail.com)

**Abstract:** Acanthaceae is a flowering plants family under the order Lamiales and comprises at least 4,000 species regardless of tropical and subtropical species with *Justicia* being the largest genus under this family. The study on the flower's petal and sepal micromorphology have been done on six *Justicia* species, namely as *Justicia betonica* L., *J. carnea* Lindl., *J. comata* (L.) Lam., *J. gendarussa* Burm.f., *J. procumbens* L. and *J. ptychostoma* Nees. Methodology used involves fixation, dehydration series, critical point drying technique and observation under scanning electron microscope. Results have shown that all six species have differences in micromorphological characteristics in the sepals and petals epidermal surfaces. Cuticular wax can be found on both abaxial and adaxial epidermal surfaces of petal and sepal for all species studied. Granular cuticular wax is the only type of cuticular wax was found present on petal and sepal of all species studied. There are also eight types of trichomes present on the petal epidermal surface and eight types of trichomes present on the sepal epidermal surface. *J. betonica* can be recognised directly by having amphidiacytic stomata on petal epidermal surface while stomata were absent on the petal epidermal surface of other species. As a conclusion, findings in this study have proven that petal and sepal micromorphological characteristics have systematic significant and can be used as supporting data for species differentiation and identification in the genus *Justicia*.

**Keywords:** Sepal and Petal Micromorphology, *Justicia*, Acanthaceae

## INTRODUCTION

Acanthaceae is a flowering plant family under the order of Lamiales and comprises at least 4,000 species regardless of tropical and subtropical species (Borg 2008). According to Hu *et al.* (2011), there are about 220 genera and 4,000 species in the pantropical and subtropical region with few species can be found in the temperate region. About 35 genera are native in Peninsular Malaysia and few have been brought to Peninsular Malaysia as ornamental plants. Acanthaceae is also the third largest tropical plants after the Myrtaceae and Melastomataceae (Grant 1955).

Acanthaceae comprises of three subfamilies which are Acanthoideae, Thunbergioideae and Nelsonioideae (Melchior 1964; Keng 1986; Borg & Schonenberger 2011). Scotland and Vollesen (2000) classified Acanthaceae into three subfamilies, Nelsonioideae, Acanthoideae and Thunbergioideae, while McDade *et al.* (2008) consider the family consists of four subfamilies, Acanthoideae, Nelsonioideae, Thunbergioideae and Andrographideae. But later, Vollesen (2008) elevated the Tribe Ruellieae to subfamily Ruellioideae. New findings by Schwarzbach and McDade (2002) and Borg (2008) have suggested that *Avicennia* has a sister relationship with Acanthaceae but still questionable and unclear in Acanthaceae lineages. The species from the Acanthaceae can be found in many habitat, having lots of morphological characters and biogeographical distribution. Taxonomic studies of Asian *Justicia* have been done by few researchers such as Clarke (1885), Benoist (1935), Hansen (1989), Cramer (1998) and Ruengsawang *et al.* (2012), but the taxonomical study on the *Justicia* in Malaysia is still scarce with only researches by some researchers such as Ridley (1923) and Ruth (2009) been known. In 2017, a study on current morphology-based classification of "justicioid" lineage with focus on Old World taxa by Kiel *et al.* (2017) confirmed

a strong support of monophyly of New World justicioids including all New World species of *Justicia*. They also added that even though some genera of justicioids are monophyletic, *Justicia* is grossly polyphyletic. The results were obtained by the combinations of diagnostic utility of morphological characters for major clades focusing on the inflorescences, androecia, seeds and pollen.

*Justicia* is the largest genus in Acanthaceae with about 600 species and distributed in the tropical and subtropical as well in both hemisphere (Wasshausen 1989). Mabberley (2008) stated that, *Justicia* L. is one of the largest and most complex genera in Acanthaceae. According to McDade *et al.* (2008), even though Acanthaceae is an important component in the tropical and subtropical all over the world, taxonomists are still having scarce information about the family especially in part of petal and sepal micromorphology.

In this study, the investigation focused just at the micromorphological characteristics of petal and sepal epidermal surfaces on some *Justicia* species in Peninsular Malaysia in order to understand more on the micromorphological characteristics of the flower (especially on the petals and sepals).

## **MATERIALS AND METHODS**

Six species were chosen (*J. betonica* T. Anderson, *J. carnea* Hook. ex Nees, *J. comata* Vellozo ex Nees, *J. gendarussa* J. Macrae ex Nees, *J. procumbens* T. Anderson ex Nees, and *J. ptychostoma* Nees) for this study. Fresh samples of flower were used and were collected from several forest reserves, as shown in Table 1 and Fig. 1. Observation under scanning electron microscope follows Barthlott *et al.* (1998) and Noraini (2006) with few modifications. Small piece of petal and sepal were fixed in 4% glutaraldehyde for 12–24 h at 4°C prior to the dehydration in alcohol series (35%, 50%, 75%, 95%, 100%) followed by critical point drying using drying machine model Polaron CPD 7501, were then been attached to the aluminium stubs with double sided adhesive tape and then sputter-coated with a thin film of gold using Gold Coater model BioRad SC500 to improve the electrical conducting properties of the leaf surface. Samples then were examined under a scanning electron microscope model Philips XL Series XL 30 with magnification up to 10,000x. The description of petal and sepal micromorphology follows Radford *et al.* (1974) and Singh and Jain (1975).



**Figure 1:** Species used in this study. A) *J. betonica*, B) *J. carnea*, C) *J. comata*, D) *J. gendarussa*, E) *J. procumbens*, F) *J. ptychostoma*.

**Table 1:** Sources of plant material.

Taxa	Collector and sources
<i>J. betonica</i>	Che Nurul Aini & Ruzi Abdul Rahman, CNA6, 9.05.2012, Bangi, Selangor
<i>J. carnea</i>	Amirul Aiman & Ruzi Abd Rahman, MAA22, 22.05.2013, Lady Maxwell Road, Fraser's Hill, Pahang
<i>J. comata</i>	Amirul Aiman & Ruzi Abd Rahman, MAA3, 12.10.2012, Bangi, Selangor
<i>J. gendarussa</i>	Amirul Aiman & Ruzi Abd Rahman, MAA66, 8.03.2014, Kuala Woh Forest Reserve, Tapah, Perak
<i>J. procumbens</i>	Amirul Aiman & Ruzi Abd Rahman, MAA63, 7.03.2014, Kuala Woh Forest Reserve, Tapah, Perak
<i>J. ptychostoma</i>	Amirul Aiman & Ruzi Abd Rahman, MAA14, 21.05.2013, Bishop's Trail, Fraser's Hill, Pahang

## RESULTS

The summary of the result can be found in the Tables 2 and 3 in the Appendix.

## **Petal**

### ***J. comata***

**Wax:** present in form of film layer and granular on both abaxial and adaxial epidermal. **Cuticular striation on abaxial epidermal:** obscure, periclinal and anticlinal wall cannot be differentiated. **Cuticular striation on adaxial epidermal:** clearly define, with periclinal wall merged at certain area, forming conical shape papillae, anticlinal wall sunken, tiny striae present at certain area of epidermal surface and present almost parallel towards the peak of papillae, no striae present at the peak of papillae. **Stomata:** absent. **Trichome:** simple multicellular or simple uniseriate (short to long, with echinate ornamentation) sparsely scattered on the abaxial epidermal and peltate glandular trichome (multicellular terminal-2 cells) sparsely scattered on the adaxial epidermal.

### ***J. betonica***

**Wax:** present in form of film layer and flakes cuticular waxes on the abaxial epidermal, film and granular cuticular waxes present on the adaxial epidermal. **Cuticular striation on abaxial epidermal:** clear, periclinal wall merged and anticlinal epidermal sunken. **Cuticular striation on adaxial epidermal:** clear, periclinal walls sunken, striae present at certain area forming parallel line heading to the middle part of periclinal wall. **Stomata:** amphistomatic, parafacial, present sparsely scattered, subsidiary and epidermal cell can be differentiated, three subsidiary cells, anisocytic stomata, elliptical in shape, epidermal cells/ subsidiary cells do not over arching the stomata, stomata size 12.66–16.32  $\mu\text{m}$  long, 9.38–12.43  $\mu\text{m}$  width. **Trichome:** peltate glandular (multicellular terminal, 4-cells), sparsely scattered on the abaxial epidermal and simple multicellular or simple uniseriate (short to long, echinate ornamentation) present densely scattered especially on the venation area and sparsely scattered on adaxial epidermal of petal.

### ***J. procumbens***

**Wax:** present in form of film layer and granule cuticular wax on both abaxial and adaxial epidermal. **Cuticular striation on abaxial epidermal:** clear, periclinal wall merged and anticlinal wall sunken. **Cuticular striation on adaxial epidermal:** clear, with periclinal wall merged forming conical shape with wide base papillae, striae present on the entire surface of periclinal wall almost parallel towards the peak of papillae, strips present on the peak of papillae, anticline wall sunken. **Stomata:** absent. **Trichome:** simple multicellular or simple uniseriate (short to long, echinate ornamentation) present less dense on the surface of abaxial epidermal of petal, capitate glandular (multicellular short stalk – multicellular terminal) sparsely scattered on the adaxial epidermal surface.

### ***J. carnea***

**Wax:** in form of film layer and granule cuticular wax present on both abaxial and adaxial epidermal. **Cuticular striation on abaxial epidermal:** clear, periclinal wall merged and anticlinal wall sunken, fine parallel cuticle strips present on the abaxial epidermal surface. **Cuticular striation on adaxial epidermal:** clear, with pericline wall merged forming lobe-shaped papillae, anticlinal wall sunken, striae with rugulate pattern present randomly on the surface of pericline wall. **Stomata:** absent. **Trichome:** capitate glandular (long stalk, short middle cell and swollen long base cell – multicellular terminal), simple unicellular (short, conical shape) and simple multicellular or simple uniseriate (short to long, echinate ornamentation) sparsely scattered on the abaxial epidermal surface of petal.

### ***J. ptychostoma***

**Wax:** crustose and granule cuticular wax present on the abaxial epidermal surface, film layer and granule cuticular wax present on the adaxial epidermal surface of petal. **Cuticular striation on abaxial epidermal:** unclear, periclinal wall merged and anticlinal wall sunken at certain area, anticlinal wall merged and periclinal wall sunken at certain area. **Cuticular striation on adaxial epidermal:** clear, pericline wall merged and anticline wall sunken, striae present and randomly arranged in the epidermal surface. **Stomata:** absent. **Trichome:** simple multicellular or simple uniseriate (short to long, echinate ornamentation) and simple unicellular (short, echinate ornamentation) sparsely scattered on the abaxial epidermal surface of petal.

### ***J. gendarussa***

**Wax:** present in form of film layer and granule cuticular wax on both abaxial and adaxial epidermal surface. **Cuticular striation on abaxial epidermal:** clear, periclinal wall merged forming lobe-shaped papillae, anticlinal wall sunken, striate pattern striae present on the surface of periclinal wall. **Cuticular striation on adaxial epidermal:** clear, periclinal wall sunken and anticline wall merged forming crest. **Stomata:** absent. **Trichome:** peltate glandular (multicellular terminal – 2 cells) and peltate glandular (multicellular terminal – 4 cells) sparsely scattered on the abaxial epidermal surface, simple multicellular or simple uniseriate (short, conical shape) very sparsely scattered on the adaxial epidermal surface.

## **Sepal**

### ***J. comata***

**Wax:** in form of film layer, crustose and granule cuticular wax present on the abaxial epidermal, Film layer and granule cuticular wax present on the adaxial

epidermal surface. **Cuticular striation on abaxial epidermal:** clear, periclinal wall merged and anticlinal wall sunken. **Cuticular striation on adaxial epidermal:** clear, periclinal wall merged and anticlinal wall sunken. **Stomata:** superficial, hypostomatic (present only on the abaxial epidermal surface), present less dense, randomly distributed, clear differences between subsidiary cells and epidermal cells, three subsidiary cells, anisocytic stomata, elliptical shape, epidermal cells/subsidiary cells do not surround the stomata, stomata size 15.0–16.5  $\mu\text{m}$  long x 10.2–11.9  $\mu\text{m}$  width. **Trichome:** peltate glandular (multicellular terminal – 4 cells) present dense on both abaxial and adaxial epidermal surfaces of sepal (arrow), simple unicellular (short to long, echinate ornamentation) present less dense on the abaxial epidermal surface, simple unicellular (short to long, without echinate ornamentation) sparsely scattered on both abaxial and adaxial epidermal surface.

### ***J. betonica***

**Wax:** in form of film layer and granule cuticular wax present on both abaxial and adaxial epidermal surface. **Cuticular striation on abaxial epidermal:** unclear, periclinal wall sunken and anticlinal wall merged forming crest, fine strips of cuticle present parallel on the anticlinal and periclinal wall. **Cuticular striation on adaxial epidermal:** unclear, with periclinal wall sunken and anticlinal wall merged forming crest (thin at some part and thick at some part), papillae present, fine unparallelled strips present on the papillae. **Stomata:** absent. **Trichome:** simple unicellular (short to long, echinate ornamentation) and simple multicellular or simple uniseriate (short to long, echinate ornamentation) densely scattered on the abaxial epidermal surface.

### ***J. procumbens***

**Wax:** in form of film layer, granule and flakes cuticular wax present on both abaxial and adaxial epidermal surface. **Cuticular striation on abaxial epidermal:** clear, periclinal wall merged and anticlinal wall sunken. **Cuticular striation on adaxial epidermal:** clear, periclinal wall merged and anticlinal wall sunken. **Stomata:** parafacial, amphistomatic, present on abaxial and adaxial epidermal surface densely scattered, subsidiary cells and epidermal cells can be differentiated, two subsidiary cells, diacytic stomata, elliptical, epidermal cells/subsidiary cells do not encircle the stomata, stomata size 11.5–16.9  $\mu\text{m}$  long x 7.2–11.9  $\mu\text{m}$  width. **Trichome:** peltate glandular (multicellular terminal – 8 cells), capitate glandular (short stalk – unicellular terminal) sparsely scattered on the abaxial epidermal surface, simple multicellular or simple uniseriate (short to long, echinate ornamentation) and capitate glandular (multicellular long stalk – lobes unicellular terminal) present randomly and very densely scattered on the abaxial epidermal surface, simple multicellular or simple uniseriate (short to long, echinate ornamentation) and peltate glandular (multicellular terminal – 4 cells) present on the adaxial epidermal surface.



### ***J. carnea***

**Wax:** in form of film layer, granules and flakes present on both abaxial and adaxial epidermal surface. **Cuticular striation on abaxial epidermal:** clear, periclinal wall merged and anticlinal wall sunken. **Cuticular striation on adaxial epidermal:** clear, periclinal wall merged and anticlinal wall sunken. **Stomata:** superficial, hypostomatic (present only on the abaxial epidermal surface), randomly and sparsely scattered, clear differences between subsidiary cells and epidermal cells, two subsidiary cells, anisocytic stomata, elliptical, epidermal cells/subsidiary cells do not encircle the stomata, stomata size 13.6–15.7  $\mu\text{m}$  long x 7.9–8.3  $\mu\text{m}$  width. **Trichome:** simple multicellular or simple uniseriate (short to long, echinate ornamentation) and peltate glandular (multicellular terminal – 8 cells) sparsely scattered on both abaxial and adaxial epidermal surface.

### ***J. ptychostoma***

**Wax:** in form of film layer, wax block, flakes and granule cuticular present on abaxial epidermal surface. Film layer, flakes and granule cuticular wax present on adaxial epidermal surface. **Cuticular striation on abaxial epidermal:** clear, periclinal wall merged and anticlinal wall sunken. **Cuticular striation on adaxial epidermal:** clear, periclinal wall merged and anticlinal wall sunken. **Stomata:** superficial, hypostomatic (present only on the abaxial epidermal surface), randomly and sparsely scattered, clear differences between subsidiary cells and epidermal cells, two subsidiary cells, parasitic stomata, elliptical, epidermal cells/subsidiary cells do not surround stomata, stomata size 17.4–20.0  $\mu\text{m}$  long x 9.7–12.7  $\mu\text{m}$  width. **Trichome:** simple unicellular (short to long, without echinate ornamentation) densely scattered on both abaxial and adaxial epidermal surface, simple unicellular (short to long, echinate ornamentation) very sparsely scattered on abaxial and adaxial epidermal surface, and peltate glandular (multicellular terminal – 4 cells) sparsely scattered on the abaxial and adaxial epidermal surface of sepal.

### ***J. gendarussa***

**Wax:** film layer, granules and flakes present on abaxial and adaxial epidermal surface. **Cuticular striation on abaxial epidermal:** clear, periclinal wall merged and anticlinal wall sunken. **Cuticular striation on adaxial epidermal:** clear, periclinal wall merged and anticlinal wall sunken. **Stomata:** parafacial, amphistomatic, sparsely scattered on abaxial and adaxial epidermal surface, randomly distributed, clear differences between subsidiary cells and epidermal cells, three subsidiary cells, anisocytic stomata, elliptical, epidermal cells/subsidiary cells do not encircle the stomata, stomata size 28.1–35.2  $\mu\text{m}$  long x 13.7–16.2  $\mu\text{m}$  width. **Trichome:** simple unicellular (short to long, echinate ornamentation) and peltate glandular (multicellular terminal – 8 cells) present on abaxial epidermal surface, capitate glandular and capitate glandular (multicellular short stalk – multicellular terminal, 2 cells) present only on adaxial epidermal surface.

## DISCUSSION

### Common Micromorphological Characteristics

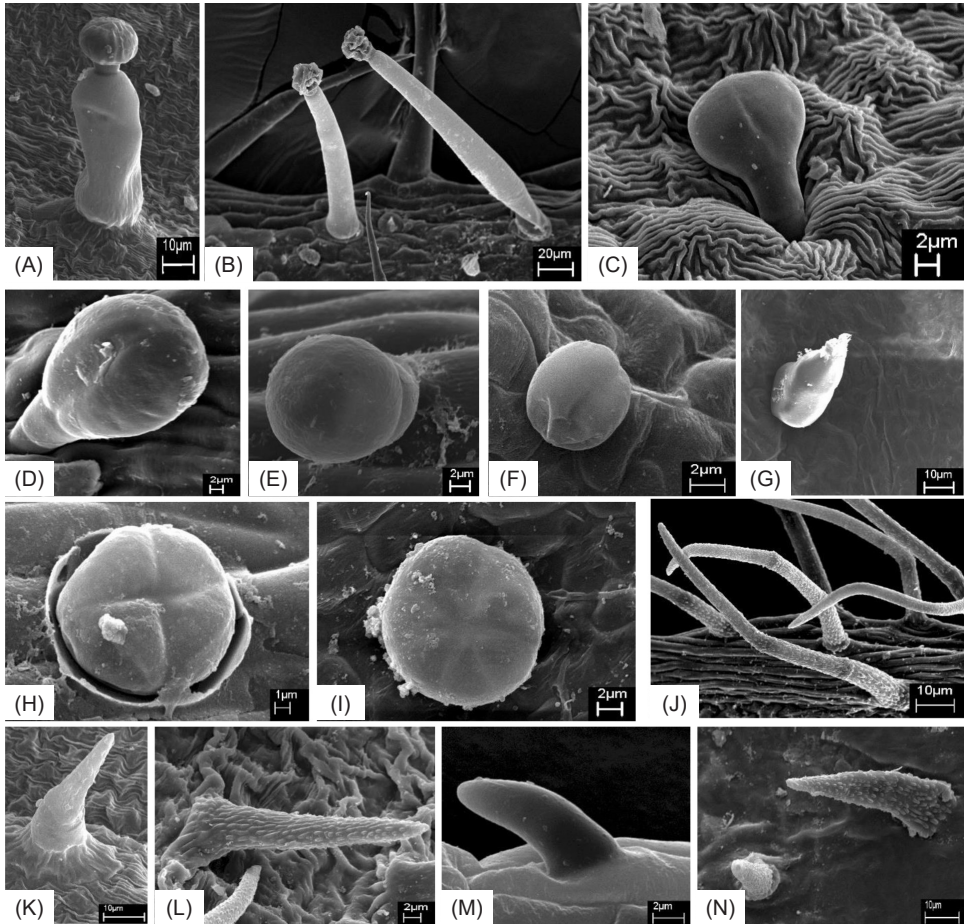
Cuticular waxes can be found on both abaxial and adaxial epidermal surfaces of petal and sepal in all species studied. Granular cuticular wax is the only type of wax that is present on petal and sepal of all species studied. Thus, these characters could be used to group all species studied under the same genus *Justicia*.

### Interspecies Variation

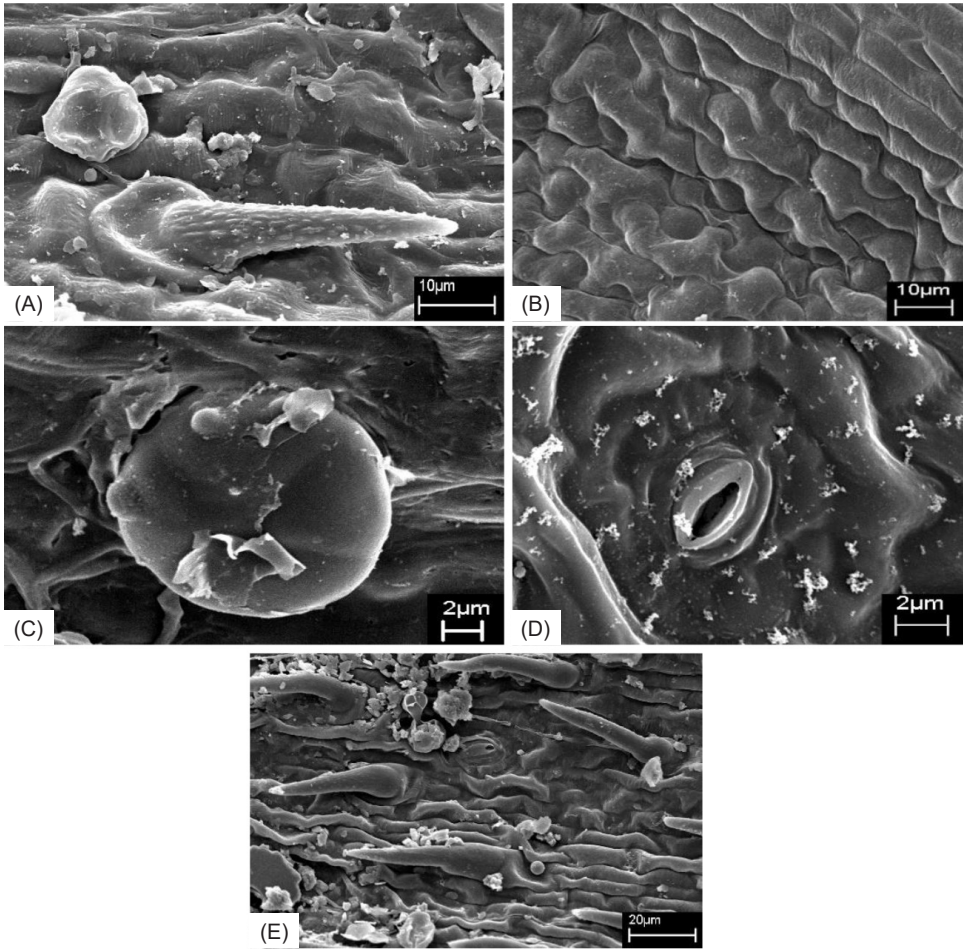
According to Inamdar (1967), trichomes can be used for species delimitation. Trichomes are physical resistivity structure that are present on plants (Levin 1929), and having characters that can be used for plant taxonomical study (Metcalf & Chalk 1979). There are eight types of trichomes present in the petal and eight types present in the sepal. Trichomes present in the petals are simple unicellular, simple multicellular (simple uniseriate), capitate and peltate glandular. Simple and glandular trichomes present in all *Justicia* species studied but vary in detail micromorphological structures. Results have shown that some *Justicia* species can be differentiated and identified based on the types of trichomes. Types of trichomes present are shown in Fig. 2.

Presence of cuticular wax on both abaxial and adaxial epidermal surfaces of petal and sepal in all species were recorded. Types of cuticular wax present on petal and sepal epidermal surfaces are film layer, granules, flakes, block and crustose. The occurrence of cuticular waxes is very useful for species identification and it is proven in this study. Crustose cuticular wax is only found in the petal of *J. ptychostoma*. Grouping and species differentiation in the genus can be done using the type of cuticular wax present. According to Barthlott and Frolich (1983), the cuticular wax occurrence on epidermal does have a taxonomical value and can be used in species identification. Types of cuticular waxes present can be seen in Fig. 3.

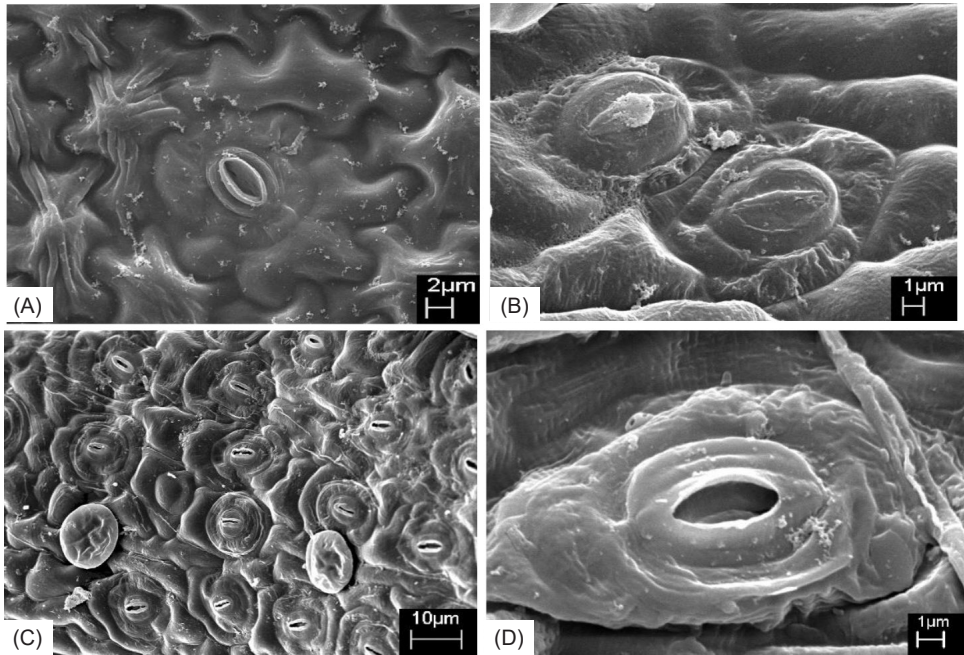
According to Watson (1962), the morphology of stomata has long been looked upon as a one of the useful taxonomic criteria. Stomata occurrence and types are also very useful in the species recognition in *Justicia*. For instances *J. betonica* can be recognised directly by having amphidiacytic stomata on petal epidermal surface while stomata were absent in the petal epidermal surface of other species. *J. procumbens* and *J. gendarussa* can also be differentiated from other species by the presence of amphistomatic stomata on its sepal. *J. comata*, *J. carnea* and *J. ptychostoma* do have stomata but only on the abaxial epidermal surface of sepal (hypostomatic). Therefore, the occurrence of stomata is very useful for taxonomic study of *Justicia* (Acanthaceae). Study on flowers anatomy by O'Neill (2010) in *J. brandegeana* have shown that stomata were only present on the abaxial epidermal surface (hypostomatic). However, in the study by Patil and Patil (2011), the results showed that *J. trinervia* and *J. wynaddensis* were having amphistomatic and hypostomatic stomata respectively. Fig. 4 shows the types of stomata occurrence in the species studied.



**Figure 2:** Types of trichomes found in this study. A) Capitulate glandular (long stalk, short middle cell, swollen long base cell – multicellular terminal), B) Capitulate glandular (multicellular long stalk – lobes unicellular terminal), C) Capitulate glandular (multicellular short stalk – multicellular terminal), D) Capitulate glandular (multicellular short stalk – multicellular terminal, 2 cells), E) Capitulate glandular (short stalk – unicellular terminal), F) Peltate glandular (multicellular terminal – 2 cells), G) Simple unicellular (short, conical shape), H) Peltate glandular (multicellular terminal – 4 cells), I) Peltate glandular (multicellular terminal – 8 cells), J) Simple multicellular (short to long, echinate ornamentation), K) Simple multicellular (short, conical shape), L) Simple unicellular (short to long, echinate ornamentation), M) Simple unicellular (short to long, without echinate ornamentation), N) Simple unicellular (short, echinate ornamentation).

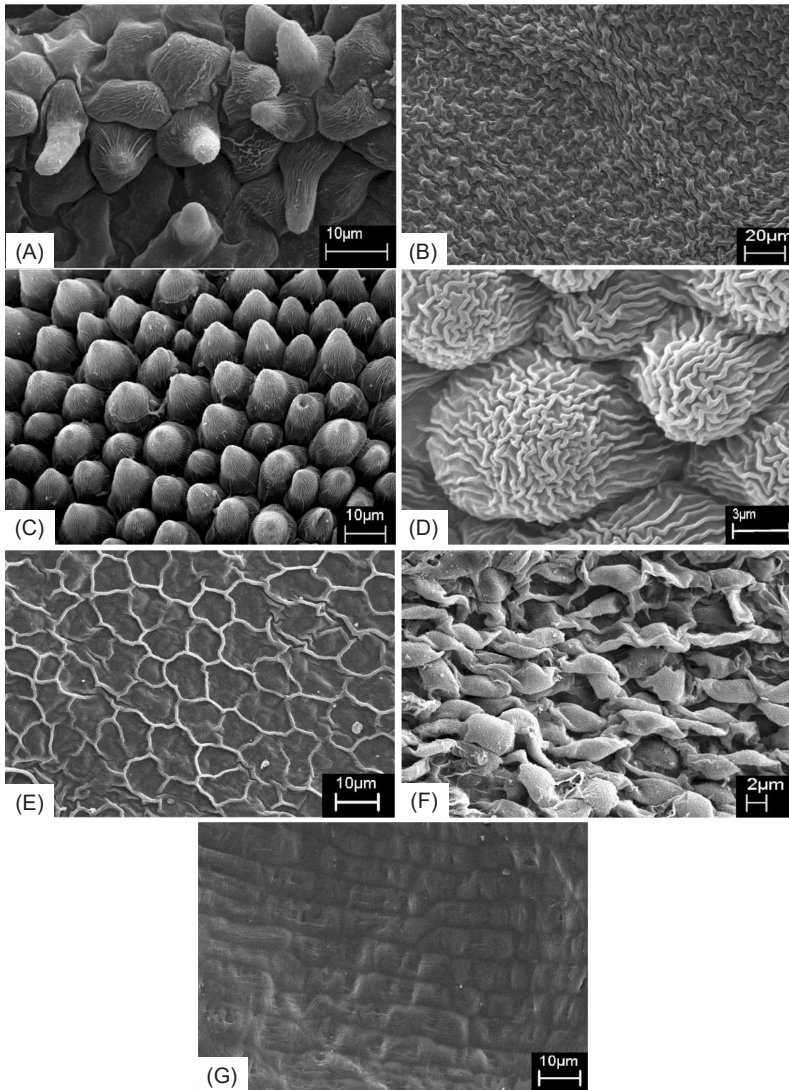


**Figure 3:** Types of cuticular waxes found in this study. A) Granule, B) Film layer, C) Flakes, D) Crustose, E) Block.



**Figure 4:** Types of stomata found in this study. A) Anisocytic stomata (parafacial), B) Anisocytic stomata (superficial), C) Diacytic stomata (parafacial), D) Parasitic stomata (superficial).

The variation can also be seen in the petal and sepal epidermal cuticle ornamentation. Different types of cuticular striation present undoubtedly indicate that each species can be differentiated from others. According to Tewary and Sarkar (1985) in their study on *Vatica* (Dipterocarpaceae) in India, cuticle ornamentation does have high taxonomical value and can be used in for species identification. Cuticle ornamentation variation of the species studied can be seen in Fig. 5.



**Figure 5:** Pattern of anticlinal wall found in this study. A) Tiny striae present at certain part of periclinal epidermal surface and present almost parallel towards the peak of papillae, no striae at the peak of papillae, anticlinal wall sunken, B) Periclinal epidermal emerged and anticline epidermal sunken, C) Periclinal wall merged forming conical shape with wide base papillae, striae present on the entire surface of periclinal wall almost parallel towards the peak of papillae, strips on the peak of papillae, anticline wall sunken, D) Periclinal wall merged forming lobe-shaped papillae, Striae with rugulate pattern present on the surface of periclinal wall, E) Periclinal wall sunken and anticline wall merged forming crest, F) Periclinal wall sunken and anticline wall merged forming crest (thin at some part and thick at some part), papillae present, fine unparallel strips present on the papillae, G) Periclinal wall merged and anticlinal wall sunken.

## CONCLUSION

As a conclusion, the study on the petal and sepal micromorphological characteristics can be used as supporting data for species differentiation and identification in *Justicia*.

## ACKNOWLEDGEMENTS

Authors would like to thank Faculty of Science and Technology, Universiti Kebangsaan Malaysia for providing the facilities to conduct this study. Authors also would like to extend gratitude to Scanning Electron Microscopy Unit FST UKM for the helps and guidance in the process of this research. Authors also thank RIGS 16-095-0259 Grant (IIUM) for the funding provided for this research. Special thanks for Ministry of Higher Education Malaysia and Universiti Putra Malaysia.

## REFERENCES

- Barthlott W, Nienhus C, Cutler D, Ditsch F, Meusel I and Wihelmi H. (1998). Classification and terminology of plant epicuticular waxes. *Botanical Journal of the Linnean Society* 126(3): 237–260. <https://doi.org/10.1111/j.1095-8339.1998.tb02529.x>
- Barthlott W and Frolich D. (1983). Micromorphology and orientation patterns epicuticular wax Kristalloide: A new systematic feature in monocots. *Plant Systematic Evolution* 142(3–4): 171–185. <https://doi.org/10.1007/BF00985897>
- Benoist R. (1935). Acanthaceae. In: F Gagnepain (ed.). *Flora Generale de L'Indo-Chine* (Volume 4). Paris: Masson et Cie, Editeurs, 610–772.
- Borg A J and Schonenberger J. (2011). Comparative floral development and structure of the black mangrove genus *Avicennia* L. and related taxa in the Acanthaceae. *International Journal of Plant Sciences* 172(3): 330–344. <https://doi.org/10.1086/658159>
- Borg A J. (2008). Phylogenetics and flora structure in *Thunbergioideae* and *Avicennia* (*Acanthaceae*). Unpublished Thesis, Stockholm University.
- Clarke C B. (1885). Acanthaceae. In: J D Hooker (ed.) *Flora of British India* (Volume 4). London: L. Reeve & Co., 387–558.
- Cramer L H. (1998). Acanthaceae. In: M D Dassanyake and F R Fosberg (eds.), *A revised handbook to the Flora of Ceylon* (Volume 12). New Delhi: Amerind Publishing, 1–121.
- Grant W F. (1955). A cytogenetic study in the Acanthaceae. *Brittonia* 8(2): 121–149. <https://doi.org/10.2307/2804856>
- Hansen B. (1989). Notes on SE Asian Acanthaceae 1. *Nordic Journal of Botany* 9(2): 209–215. <https://doi.org/10.1111/j.1756-1051.1989.tb02117.x>
- Hu J, Deng Y, Wood J R I and Daniel T F. (2011). *Acanthaceae. Flora of China* 19. Beijing, China: Science Press and St. Louis, Missouri, USA: Missouri Botanical Garden Press.
- Inamdar J A. (1967). Studies on the trichomes of some Oleaceae, structure and ontogeny. *Proceedings of the Indian Academy of Sciences-Section B* 66(4): 164–177.

- Kiel C A, Daniel T F, Darbyshire I and McDade L A. (2017). Unraveling relationships in the morphologically diverse and taxonomically challenging. *Taxon* 66(3): 645–674. <https://doi.org/10.12705/663.8>
- Keng H. (1986). *Order dan famili tumbuhan berbiji di Tanah Melayu*. Ahmad bin Mahmud (Trans.). Kuala Lumpur: Dewan Bahasa dan Pustaka.
- Levin F A. (1929). The taxonomic value of vein-islet areas based upon a study of the genera *Barosma*, *Cassia*, *Erythroxylon* and *Digitalis*. *Journal of Pharmacy and Pharmacology* 2: 17–43.
- Mabberley D J. (2008). *Mabberley's plant-book: A portable dictionary of plants, their classification and uses* (3rd Ed.). New York: Cambridge University Press.
- McDade L A, Daniel T F and Kiel C A. (2008). Toward a comprehensive understanding of phylogenetic relationships among lineages of Acanthaceae s.l. (Lamiales). *American Journal of Botany* 95(9): 1136–1152. <https://doi.org/10.3732/ajb.0800096>
- Melchior H A N S. (1964). *Syllabus of plant families II*. Berlin: Gebrüder Borntraeger.
- Metcalfe C R and Chalk L. (1979). *Anatomy of the Dicotyledons* (Volume 1). Oxford: Clarendon Press, 223–262.
- Noraini T. (2006). Systematic studies of Shorea, Hopea, Parashorea and Neobalanocarpus (Dipterocarpaceae). Unpublished doctoral dissertation. University of Reading, United Kingdom.
- O'Neill C S. (2010). Anatomy of the shrimp plant, *Justicia brandegeana* (Acanthaceae). *Studies by Undergraduate Researchers at Guelph* 3(2): 41–47.
- Patil A M and Patil D A. (2011). Investigations on foliar epidermal characteristics in some Acanthaceae. *Current Botany* 2(9): 1–7.
- Radford A E, Dickinson W C, Massey J R and Bell C R. (1974). *Vascular plant systematics*. New York: Harper & Row.
- Ridley H N. (1923). *The flora of Malay Peninsula*. London: L. Reeve & Co., 593–602.
- Ruengsawang K, Chantaranonthai P and Simpson D A. (2012). Contributions to the seed morphology and taxonomy of *Justicia* (Acanthaceae) from Thailand. *Journal of Systematics and Evolution* 50(2): 153–162. <https://doi.org/10.1111/j.1759-6831.2012.00178.x>
- Ruth K. (2009). Additions to the weed flora of Peninsular Malaysia. *Malayan Nature Journal* 61(2): 133–142.
- Scotland R W and Vollesen K. (2000). Classification of Acanthaceae. *Kew Bulletin* 55: 513–589. <https://doi.org/10.2307/4118776>
- Singh V and Jain D K. (1975). Trichomes in Acanthaceae I. General structure. *Journal of the Indian Botanical Society* 54: 116–127.
- Schwarzbach A E and McDade L A. (2002). Phylogenetics relationships of the mangrove family Avicenniaceae based on chloroplast and nuclear ribosomal DNA sequences. *Systematic Botany* 27(1): 84–98.
- Tewary P K and Sarkar A K. (1985). Taxonomical, ecological and foliar epidermal studies in Indian Dipterocarpaceae. *Proceedings of the Third Round Table Conference on Dipterocarpaceae, Regional Office for Science and Technology for Southeast Asia*. Indonesia, 537–567.
- Vollesen K. (2008). Flora of tropical East Africa: Acanthaceae. Kew: Royal Botanic Gardens.
- Wasshausen D C. (1989). New species of *Justicia* (Acanthaceae) from the Planalto of Brazil. *Brittonia* 41(4): 379–384. <https://doi.org/10.2307/2807548>
- Watson L. (1962). The taxonomic significance of stomatal distribution and morphology in Epacridaceae. *New Phytologist* 61(1): 36–40. <https://doi.org/10.1111/j.1469-8137.1962.tb06270.x>



APPENDIX

Table 2: Summary of petal micromorphological characteristics in *Justicia* species studied

Species	Wax			Cuticular striation on epidermis			Stomata		Trichomes	
	Abaxial	Adaxial	Abaxial	Abaxial	Adaxial	Abaxial	Adaxial	Abaxial	Adaxial	Abaxial
<i>J. comata</i>	<ul style="list-style-type: none"> <li>• Film layer</li> <li>• Granule</li> </ul>	<ul style="list-style-type: none"> <li>• Film layer</li> <li>• Granule</li> </ul>	Not clear, periclinal and anticlinal wall cannot be differentiated	Clear, periclinal wall merged at certain area, papillae with conical shape, anticlinal wall sunken, tiny striae present almost parallel towards the peak of papillae, no striae at the peak of papillae.	Absent	Absent	Absent	Simple multicellular (short to long, echinate ornamentation)	Peltate glandular trichome (multicellular terminal – 2 cells)	
<i>J. betonica</i>	<ul style="list-style-type: none"> <li>• Film layer</li> <li>• Flakes</li> </ul>	<ul style="list-style-type: none"> <li>• Film layer</li> <li>• Granule</li> </ul>	Clear, periclinal epidermal emerged while anticlinal epidermal sunken	Clear, periclinal epidermal emerged and anticlinal epidermal sunken, striae present at certain part of periclinal epidermal forming parallel line heading to the middle part of periclinal epidermal.	Present	Present	Present	Peltate glandular (multicellular terminal – 4 cells), Simple multicellular (short to long, echinate ornamentation)	Simple multicellular (short to long, echinate ornamentation)	
<i>J. procumbens</i>	<ul style="list-style-type: none"> <li>• Film layer</li> <li>• Granule</li> </ul>	<ul style="list-style-type: none"> <li>• Film layer</li> <li>• Granule</li> </ul>	Clear, periclinal wall merged and anticlinal wall sunken	Clear, periclinal wall merged forming conical shape with wide base papillae, striae present on the entire surface of periclinal wall almost parallel towards the peak of papillae, strips present on the peak of papillae, anticlinal wall sunken.	Absent	Absent	Absent	Simple multicellular (short to long, echinate ornamentation)	Capitate glandular (multicellular short stalk – multicellular terminal)	

(Continued on next page)

**Table 2 (Continued)**

Species	Wax		Cuticular striation on epidermis				Stomata		Trichomes	
	Abaxial	Adaxial	Abaxial	Adaxial	Abaxial	Adaxial	Abaxial	Adaxial	Abaxial	Adaxial
<i>J. carnea</i>	<ul style="list-style-type: none"> <li>• Film layer</li> <li>• Granule</li> </ul>	<ul style="list-style-type: none"> <li>• Film layer</li> <li>• Granule</li> </ul>	Clear, pericinal wall merged and anticlinal wall sunken, fine parallel cuticle strips present on the abaxial epidermal surface	Clear, pericinal wall merged forming lobe-shaped papillae, anticlinal wall sunken, striae with rugulate pattern present randomly on the surface of pericinal wall	Absent	Absent	Absent	Absent	Capitate glandular (long stalk, short middle cell, swollen long base cell – multicellular terminal), Simple unicellular (Short, conical shape), Simple multicellular (short to long, echinate ornamentation)	Absent
<i>J. ptychostoma</i>	<ul style="list-style-type: none"> <li>• Crustose</li> <li>• Granule</li> </ul>	<ul style="list-style-type: none"> <li>• Film layer</li> <li>• Granule</li> </ul>	Unclear, pericinal wall merged and anticlinal wall sunken at certain area, anticlinal wall merged and pericinal wall sunken at certain area	Clear, pericinal wall merged and anticlinal wall sunken, striae present and randomly arranged in the epidermal surface	Absent	Absent	Absent	Absent	Simple multicellular (short to long, echinate ornamentation), Simple unicellular (short, echinate ornamentation)	Absent
<i>J. gendarussa</i>	<ul style="list-style-type: none"> <li>• Film layer</li> <li>• Granule</li> </ul>	<ul style="list-style-type: none"> <li>• Film layer</li> <li>• Granule</li> </ul>	Clear, pericinal wall merged forming lobe-shaped papillae, anticlinal wall sunken, striate pattern striae present on the surface of pericinal wall	Clear, pericinal wall sunken and anticlinal wall merged forming crest	Absent	Absent	Absent	Absent	Peltate glandular (multicellular terminal – 2 cells), Peltate glandular (multicellular terminal – 4 cells)	Simple multicellular (short, conical shape)

**Table 3:** Summary of sepal micromorphological characteristics in *Justicia* species studied

Species	Wax		Cuticular epidermal		Stomata		Trichomes	
	Abaxial	Adaxial	Abaxial	Adaxial	Abaxial	Adaxial	Abaxial	Adaxial
<i>J. comata</i>	<ul style="list-style-type: none"> <li>• Film layer</li> <li>• Crustose</li> <li>• Granule</li> </ul>	<ul style="list-style-type: none"> <li>• Film layer</li> <li>• Granule</li> </ul>	Clear, periclinal wall merged and anticlinal wall sunken	Clear, periclinal wall merged and anticlinal wall sunken	Present	Absent	Peltate glandular (multicellular terminal – 4 cells), Simple unicellular (short to long, echinate ornamentation), Simple unicellular (short to long, without echinate ornamentation)	Peltate glandular (multicellular terminal – 4 cells), Simple unicellular (short to long, without echinate ornamentation)
<i>J. betonica</i>	<ul style="list-style-type: none"> <li>• Film layer</li> <li>• Granule</li> </ul>	<ul style="list-style-type: none"> <li>• Film layer</li> <li>• Granule</li> </ul>	Not clear, periclinal wall sunken and anticlinal wall merged forming crest, fine strips of cuticle present parallel to the anticlinal and periclinal wall	Not clear, periclinal wall sunken and anticlinal wall merged forming crest (thin at some part and thick at some part), papillae present, fine unparallel strips present on the papillae	Absent	Absent	Simple unicellular (short to long, echinate ornamentation), Simple multicellular (short to long, echinate ornamentation)	Absent
<i>J. procumbens</i>	<ul style="list-style-type: none"> <li>• Film layer</li> <li>• Granule</li> <li>• Flakes</li> </ul>	<ul style="list-style-type: none"> <li>• Film layer</li> <li>• Granule</li> <li>• Flakes</li> </ul>	Clear, periclinal wall merged and anticlinal wall sunken	Clear, periclinal wall merged and anticlinal wall sunken	Present	Present	Peltate glandular (multicellular terminal – 8 cells), Capitate glandular (short stalk – unicellular terminal), Simple multicellular (short to long, echinate ornamentation), Capitate glandular (multicellular long stalk – lobes unicellular terminal)	Simple multicellular (short to long, echinate ornamentation), Peltate glandular (multicellular terminal – 4 cells)

(Continued on next page)

**Table 3 (Continued)**

Species	Wax			Cuticular epidermal			Stomata		Trichomes		
	Abaxial	Adaxial	Abaxial	Abaxial	Adaxial	Adaxial	Abaxial	Adaxial	Abaxial	Adaxial	Adaxial
<i>J. carnea</i>	<ul style="list-style-type: none"> <li>• Film layer</li> <li>• Granule</li> <li>• Flakes</li> </ul>	<ul style="list-style-type: none"> <li>• Film layer</li> <li>• Granule</li> <li>• Flakes</li> </ul>	Clear, with periclinal wall merged and anticlinal wall sunken	Clear, periclinal wall merged and anticlinal wall sunken	Clear, periclinal wall merged and anticlinal wall sunken	Present	Absent	Simple multicellular (short to long, echinate ornamentation), Peltate glandular (multicellular terminal – 8 cells)	Simple multicellular (short to long, echinate ornamentation), Peltate glandular (multicellular terminal – 8 cells)	Simple multicellular (short to long, echinate ornamentation), Peltate glandular (multicellular terminal – 8 cells)	Simple multicellular (short to long, echinate ornamentation), Peltate glandular (multicellular terminal – 8 cells)
<i>J. ptychostoma</i>	<ul style="list-style-type: none"> <li>• Film layer</li> <li>• Block</li> <li>• Flakes</li> </ul>	<ul style="list-style-type: none"> <li>• Film layer</li> <li>• Granule</li> <li>• Flakes</li> </ul>	Clear, periclinal wall merged and anticlinal wall sunken	Clear, periclinal wall merged and anticlinal wall sunken	Clear, periclinal wall merged and anticlinal wall sunken	Present	Absent	Simple unicellular (short to long, without echinate ornamentation), Simple unicellular (short to long, echinate ornamentation), Simple unicellular (short to long, echinate ornamentation)	Simple unicellular (short to long, without echinate ornamentation), Simple unicellular (short to long, echinate ornamentation), Simple unicellular (short to long, echinate ornamentation)	Simple unicellular (short to long, without echinate ornamentation), Simple unicellular (short to long, echinate ornamentation)	Simple unicellular (short to long, without echinate ornamentation), Simple unicellular (short to long, echinate ornamentation)
<i>J. gendarussa</i>	<ul style="list-style-type: none"> <li>• Film layer</li> <li>• Granule</li> <li>• Flakes</li> </ul>	<ul style="list-style-type: none"> <li>• Film layer</li> <li>• Granule</li> <li>• Flakes</li> </ul>	Clear, periclinal wall merged and anticlinal wall sunken	Clear, periclinal wall merged and anticlinal wall sunken	Clear, periclinal wall merged and anticlinal wall sunken	Present	Present	Simple unicellular (short to long, echinate ornamentation), Peltate glandular (multicellular terminal, 2 cells)	Simple unicellular (short to long, echinate ornamentation), Peltate glandular (multicellular terminal, 2 cells)	Capitate glandular (multicellular short stalk – multicellular terminal, 2 cells)	Capitate glandular (multicellular short stalk – multicellular terminal, 2 cells)