

## GRAPHICAL ABSTRACT

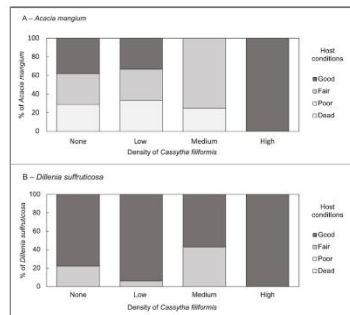
### Host Selectivity and Distribution of *Cassytha filiformis* in the Coastal Bornean Heath Forests

Roshanizah Rosli\*, Kushan U. Tennakoon, Muhammad Yusran S.M. Yaakub, Nur Aqilah H. Zainal Ariffin and Faizah Metali\*

#### Host selectivity and distribution of *Cassytha filiformis* in the coastal Bornean heath forests

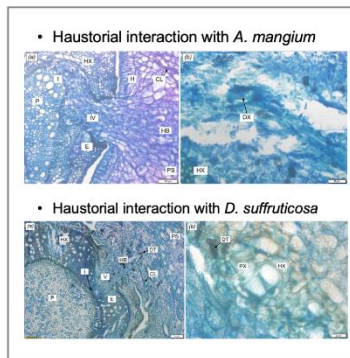


Sixteen shrubs and tree species in the coastal Bornean heath forests were infected by *Cassytha filiformis*: Native *Dillenia suffruticosa* and exotic *Acacia mangium* are the most preferred and common hosts



A trend of higher parasite vigour when infecting native hosts than in exotic hosts.

A trend of higher parasite density when infecting *A. mangium*, regardless of the host conditions.



*C. filiformis* established a true haustorial endophytic connection with studied hosts.